

Traces

November 15 - December 6, 2025

Amy Golden

Francis Dooley

Hannah Erwin

Jason Herr

Opening Reception: Saturday, November 15th from 7-10pm

Closing Reception & Artist Talk: Saturday, December 6th from 6-9pm. Talk 7pm.

Gallery Hours: Saturdays, 1-5pm or or by appointment

Traces is a collection of intimate drawings, ceramics, and metalwork using symbols and storytelling to echo portraits – of self, of place, of friends, and psychological spaces – like a flashlight into another realm. Entangling the self with the other, tracing memories, and merging experiences.



Jason Herr
Stoic Armor, 2025
Mixed Media
14x18"
\$1500



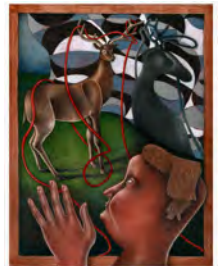
Amy Golden
Chair Mountain, 2023
Stoneware, glaze
11x13.5x12"
\$1800



Hannah Erwin
Martini, 2024
Charcoal on paper
14x18"
\$1,700



Hannah Erwin
Dust Heart, 2023
Graphite on paper
11x14"
NFS



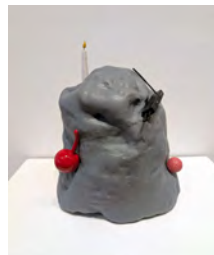
Jason Herr
Window View, 2023
Mixed Media
14x18"
\$1500



Francis Dooley
Kyrie Eleison, 2025
Steel, layered MIG welds, gilding wax
59.5x13"
\$2500



Hannah Erwin
Pisces, 2024
Graphite on paper
12x9"
\$400



Amy Golden
Memory Mound 2, 2024
Stoneware, glaze
16x13.5x12"
\$1800



Jason Herr
Building Background, 2025
Mixed Media
11x14"
\$1300



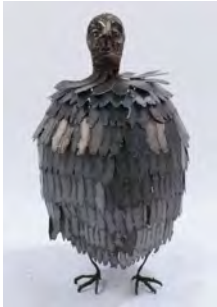
Jason Herr
Two Apples an Orange, and a Banana, 2025
Colored pencil
11x14"
\$1300



Hannah Erwin
Sine, 2025
Graphite on paper
22×30"
\$6,800



Hannah Erwin
Here, 2023
Graphite on paper
11×14"
NFS



Francis Dooley
Messenger (If I Didn't Have to Pray to Talk to You), 2024
Steel, MIG welds, copper & pewter patinas, rust
33.5×17"
NFS

"I imagine a world where steel birds travel to you. Heaven is just a mail route away. They tell you I'm ok, I hope you're doing well. I'm graduating soon. I'm pretty sure I told you I could never do it. I believed it at the time. In this world you're not gone when I can't hear you, and me saying that makes it true. I can see you in crouching down a bit to fit through a doorway, in friends sharing earbuds on a walk, in a red bandana that I only want back if it comes with you attached./ I forgot what I was saying. I love you. I am going to see you again./ Me saying that will make it true."



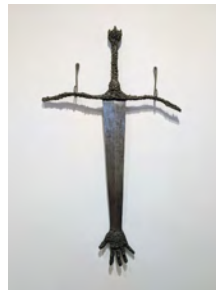
Amy Golden
Memory Mound 3, 2025
Stoneware, porcelain, glaze
16×12.×13.5"
\$1800



Amy Golden
Mound with Pink Cube, 2025
Stoneware, porcelain, glaze
3×6.25×5.5"
\$390



Amy Golden
Small Chair Mountain, 2023
Stoneware, glaze
5.5×5×4.5"
\$390



Francis Dooley
Steel Seeking Skin, 2024
Steel, layered MIG welds, copper patina
45×25.5"
\$2000



Jason Herr
Building Perception through Layers of Biology, 2025
Graphite and Colored Pencil
18×24"
\$1600



Hannah Erwin
I Miss My Pet, 2022
Graphite on paper
18×24"
\$3,700



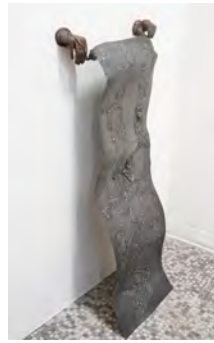
Jason Herr
Board Bird, 2025
Mixed Media
11×14"
\$1300



Amy Golden
Mud Dauber Vase, 2025
Stoneware, fired mud dauber nest
9.25×12×8"
\$500



Jason Herr
Overwhelmingly Forward, 2023
Mixed Media
14×18"
\$1500



Francis Dooley
Sendoff, 2025
Steel, MIG welds
48×16"
NFS



Hannah Erwin
Garden, 2025
Graphite and colored pencil on paper
18×24"
\$6,400



Amy Golden
Single Use Flail, 2023
Stoneware, Glaze
10" handle, 9" ball, 26" chain
\$920



Amy Golden
Memory Mound 4, 2025
Stoneware, glaze
19×13.75×12"
\$1800



Amy Golden
Hand in Fire, 2025
Stoneware, glaze
11.5×10×16"
\$2000



Amy Golden
Betrayal Mound, 2025
Stoneware, glaze
13.5×10×10.75"
\$1800

Additional Available Works



Hannah Erwin
Candle Girl, 2024
Graphite on paper
\$300



Hannah Erwin
Angel, 2025
Graphite on paper
22×30"
\$6,800

Amy Golden is an artist, craftsperson, and educator creating primarily ceramic sculpture, functional ceramic objects, and ceramic jewelry. Since 2021, she has taught Clay Club, a community hand-building course for adults, out of her private studio. She holds an MFA from the California Institute of the Arts (2016) and a BA from the University of North Texas (2012). Amy grew up in the Ozarks in northwest Arkansas and has spent time living in Denton, Texas, Minneapolis, and Los Angeles, where she worked as a composer and classical musician before turning her focus to physical objects. She currently lives and works in Baltimore, Maryland.

This body of work is largely about conscious and subconscious accumulation. I am exploring alternative methods of record keeping and translation across mediums, deprioritizing chronology and thematic content. These works largely deal with interpersonal experiences, my connection to the southern US, and encountered ideas about gender, religion, and trauma. Simplified sculptures of objects function as stand-ins for ideas, people, events, and places, filtered and somewhat flattened through the time-intensive processes intrinsic to ceramics. Both their physical and connotative attributes are useful shorthand in examining relationships, power dynamics, and implications I struggle to articulate to my satisfaction. The objective is not to communicate an exact metaphor or narrative, but to provide a framework for a kind of time travel and new sense-and-meaning-making. The term "memory mound" loosely references the southern folk art tradition of memory jugs, a collection of objects affixed to a stoneware vessel as a kind of memorial for the recently deceased.

amy-golden.com

Francis Dooley is a maker and mender, born in North Jersey and currently living in Baltimore, Maryland. Exploring themes of lost memory, Dooley's work primarily incorporates graphite drawing and metalwork. They reside in the Station North area of Baltimore City with their big cat named Totoro. Francis enjoys finding lost things and wishes to work at a public library or a metal fabrication shop while continuing their artistic practice.

My practice focuses on recalling lost things, and making objects with the purpose of finding them. With recollection being a strange process, one that warps experiences and keeps them just out of reach, the tangible process of metal fabrication is one I turn to on this mission. The strength and longevity of steel makes it a promising vessel to retain a memory.

[@thankufrancis](https://www.instagram.com/thankufrancis)

Hannah Erwin is a Baltimore-based artist whose drawings trace the overlap between place, memory, and transformation. Working in graphite and colored pencil, she reimagines familiar architecture and everyday settings as dreamlike spaces charged with feeling, moments when the familiar becomes strange again. Her images often move between clarity and distortion, turning observation into myth and fragments into story. Each drawing moves between the seen and the imagined, tracing how memory transforms what we touch, keep, and lose. Her work has been shown in regional and international exhibitions and residencies, and reflect an ongoing interest in how the ordinary becomes enchanted through observation and time.

These drawings come from watching Baltimore breathe. The rowhouses, bars, and porches feel soaked with memory, humor, and time's passage. You can feel the people who've passed through: artists, gardeners, bartenders, mechanics, poets. They leave traces that bend the rooms a little.

Some of these places have been doorways for me, ordinary spots that feel charged, like they open into something else. I think a lot of people here recognize that feeling. The city keeps its own kind of magic, small and persistent, turning the familiar into something almost unreal. These drawings follow that pulse, tracing personal memory and a shared geography.

[@allniteallmine](https://www.instagram.com/allniteallmine)

Jason Herr (b. 1977 in Lancaster, Pennsylvania) graduated with a BFA from the Pennsylvania College of Art and Design in 2016. His work has been part of numerous exhibitions in US and Europe. Some of his recent exhibitions included A Solitary Loop, Pennsylvania College of Art and Design, Pennsylvania (2023, solo); Snakes in the Grass, Newchild, Antwerp (2023); Idle Times: Pop Disorder, Current Space, Baltimore (2023); Le Dessin, Halle Saint Pierre, Paris (2022); among others. He has contributed illustration work for Mondo Zero press, Kus! comics, Lifted Brow magazine, and Future Islands. The artist lives and works in Lancaster, Pennsylvania.

[@jas0n_herr](https://www.instagram.com/jas0n_herr)

Current Space is an artist-run gallery, studio, and outdoor performance space, nourishing an ongoing dialogue between artists, activists, performers, designers, curators, and thinkers. Operating since November 2004, we are committed to showcasing, developing, and broadening the reach of artists locally and internationally. Programs at Current Space are made possible in part by supporting members like you, the Robert W. Deutsch Foundation, and William G. Baker, Jr. Memorial Fund, creator of the Baker Artist Portfolios at BakerArtist.org.

[@currentspace](https://www.instagram.com/currentspace)

Become a sustaining member

Support the programs you value by becoming a member of Current Space. Membership comes with a range of perks, from artwork discounts to free event admission to invites to Members Only parties. Memberships truly have a big impact on what we're able to do. Thank you for your support!

