

**Sophia Belkin**  
*Shadow Palms*  
2026; digitally printed fabric, screenprint, dye, and embroidery on denim  
9" x 11" x 1"  
\$350 each



**Hoesy Corona**  
*Climate Ponchos (small)*  
2024; hand cut and machine cut vinyl, clear film, leatherette  
14"H x 19"W  
\$600 each



**Hoesy Corona**  
*Climate Poncho*  
2024; hand cut vinyl on vinyl fabric, leather cord  
23"H x 30"W  
\$3000



**Emma Childs**  
*Ships*  
2025; acrylic on canvas  
38" x 32"  
\$3800



**Sophia Belkin**  
*Cotyledon*  
2024; digitally printed fabric, screenprint, dye, and embroidery on denim  
24" x 22" x 1.5"  
\$2000



**Sophia Belkin**  
*Thunder Egg*  
2024; digitally printed fabric, screenprint, dye, and embroidery on denim  
24" x 22" x 1.5"  
\$2000



**Hoesy Corona**  
*Climate Poncho*  
2024; hand cut vinyl on vinyl  
fabric, leather cord  
26.5"H x 36"W  
\$4000



**Sophia Belkin**  
*Sunbeam Fractures*  
2022; dyed linen, denim and  
embroidery  
24" x 20" x 1"  
\$1500



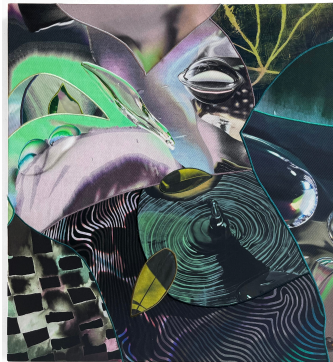
**Emma Childs**  
*Untitled*  
2024; acrylic on canvas  
24" x 25"  
\$2400



**Emma Childs**  
*Amplified #3*  
2025; acrylic on canvas  
40" x 22.5"  
\$3300



**Emma Childs**  
*Egress #2*  
2025; acrylic on canvas  
36" x 24"  
\$3200



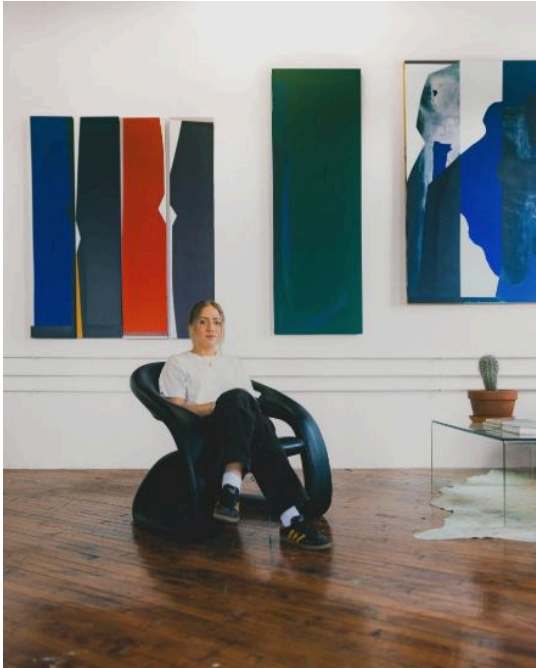
**Sophia Belkin**  
*Mirror Lake*  
2025; digitally printed textile,  
embroidery, dye and  
screenprint on cotton  
26" x 28" x 1.5"  
\$2500



**Emma Childs**  
*Untitled (ships study)*  
2025; acrylic on canvas  
24" x 24"  
\$2400



**Sophia Belkin**  
*Snow Blink*  
2024; digitally printed fabric,  
screenprint, dye, and  
embroidery on denim  
24" x 22" x 1.5"  
\$2000



**Emma Childs** (b. 1996) is an American painter exploring color abstraction as a way of transforming intangible experiences and emotions into a language of layered acrylic paintings, often on shaped canvas. Childs paintings distill the complexities of human connection and emotional states using a minimalist presenting language of simplified form, color, and shape. Color is built up in layers on the canvas; choices in color and application dance between the intuitive and calculated. These shaped canvases are simultaneously images and sculptural objects, serving as containers built to give physical presence and structure to the intangible. Childs' paintings serve as layered depictions of the worlds we build around ourselves.

Childs is based in Baltimore, MD and holds a BFA in General Fine Arts from the Maryland Institute College of Art. Her work has been exhibited internationally and is held in public and private collections across the United States as well as the UK, France, the Netherlands, and Canada. Her work has been featured in publications including Bmore Art, New American Paintings, British Vogue, UK House and Garden, Artmaze Mag, DC Modern Luxury, Create!Mag, and Dwell Magazine



**Hoesy Corona** (Baltimore, MD) is a Latinx Queer artist of Mexican descent creating uncategorized and multidisciplinary art spanning installation, performance, and sculpture. In the studio, Hoesy's work highlights the complex relationship between humans and the environment by focusing on our changing climate and its impact on habitation and migration patterns. Corona has exhibited widely in galleries, museums, and public spaces in the United States and internationally, including recent solo exhibitions *Climatic Shocks* (2023) at Praxis NY Gallery, in Manhattan, NY; *Weathering* (2022) at The Kreeger Museum presented by The Nicholson Project in Washington, DC; *Sunset Moonlight* (2021) at The Walters Art Museum in Baltimore, MD; and *Alien Nation* (2017), at The Hirshhorn Museum and Sculpture Garden presented by Transformer in Washington, DC. Hoesy has held national fellowships including at the Winston Tabb Special Collections Research Center Public Humanities Fellowship 2022-2023 at the Johns Hopkins University in Baltimore, MD; the Halcyon Arts Lab Fellowship 2017-18 in Washington, DC; and the George Kaiser Family Foundation's Tulsa Artist Fellowship 2019 & 2020 in Tulsa, OK. He is the recipient of many honors and awards including the Mellon Foundation's MAP Fund Grant; the NALAC Fund For the Arts Artist Grant; the Andy Warhol Foundation's Grit Fund Grant; and a Ruby's Artist Grant. He has attended residencies at Ox-Bow Artist Residency, Wabash College AIR, The Nicholson Project, and a Transformer Siren Arts Residency. His work has been reviewed by The Washington Post, Bmore Art Magazine, The Baltimore Sun, Baltimore Magazine, Washington City Paper, and The American Scholar among others. In 2024 Hoesy was awarded the Pratt Artist in Residence at Enoch Pratt Free Central Library in Baltimore, MD.



**Sophia Belkin** uses dye painting, embroidery and textile collage to create intricate and dynamic compositions that reference natural processes. She is inspired by her own gardening practice as well as nature at large. Calibrating between intuitive gestural mark making and the controlled line of the embroidery machine, the textile paintings create layered, multidimensional environments that imply a constant state of regeneration, expansion and flux. Her paintings explore our inextricable interconnectedness to the environment, and consider alternative futures for our ecological landscape. She uses a lens of sci-fi and abstraction to imagine how our ecology and our humanity can continue to morph, evolve and adapt in the face of unprecedented uncertainty.

Sophia Belkin was born in Moscow, Russia and currently lives and works in Baltimore. She earned her BFA in drawing and printmaking from the Maryland Institute College of Art in 2012. She has participated in residency programs in Wisconsin, Vermont, Norway, Russia, and Estonia. In May 2024 she completed a residency at the Joan Mitchell Center in New Orleans. Recent solo exhibitions include *Slice of Water* at Dinner Gallery in New York, *Peeling Shadows* at Ochi Gallery in Los Angeles and *Ground Swell* at Resort Gallery in Baltimore. She is represented by HEMPHILL in Washington DC.



**Current Space** is an artist-run gallery, studio, and outdoor performance space, nourishing an ongoing dialogue between artists, activists, performers, designers, curators, and thinkers. Operating since November 2004, we are committed to showcasing, developing, and broadening the reach of artists locally and internationally.

**Visit us** at 421 Howard Street to view our upcoming exhibitions and check out programming in our outdoor courtyard. Our gallery hours are Saturdays 1-5pm, during public garden bar hours, or by appointment.

#### **Thank You**

Programs at Current Space are made possible in part by supporting members like you and the William G. Baker, Jr. Memorial Fund, creator of the Baker Artist Portfolios at BakerArtist.org.